

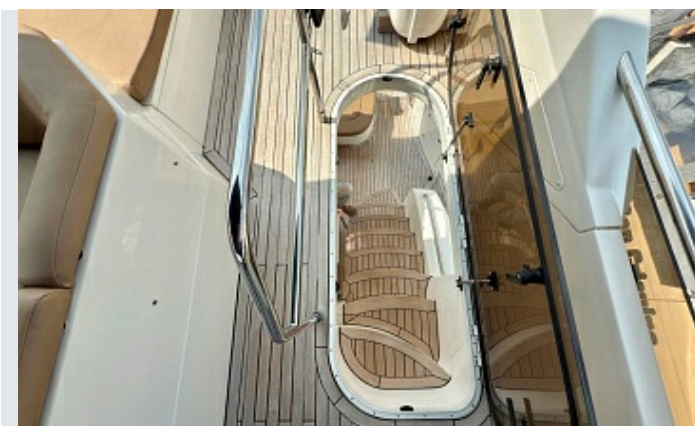
Brokerage


PRINCESS 62
70 000 000 ₺

MAIN CHARACTERISTICS

Location	Moscow
Year created	2008
Length	19,05
Width	5,03
Draft	1,45
Displacement	30 t
Engines	MAN V10 (2 x 1100 hp)
Operating time	1976
Water supply	900

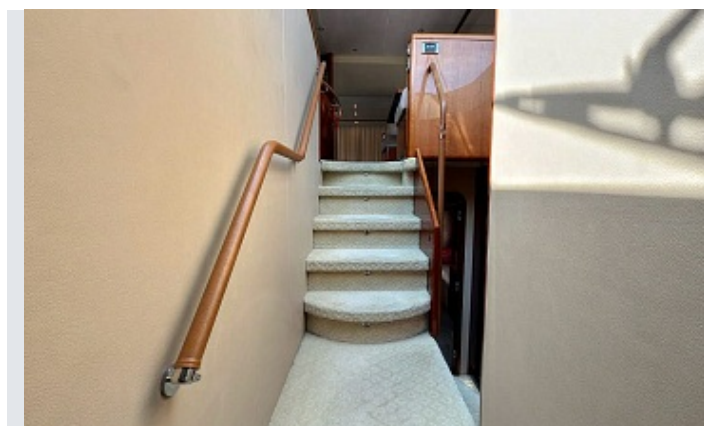
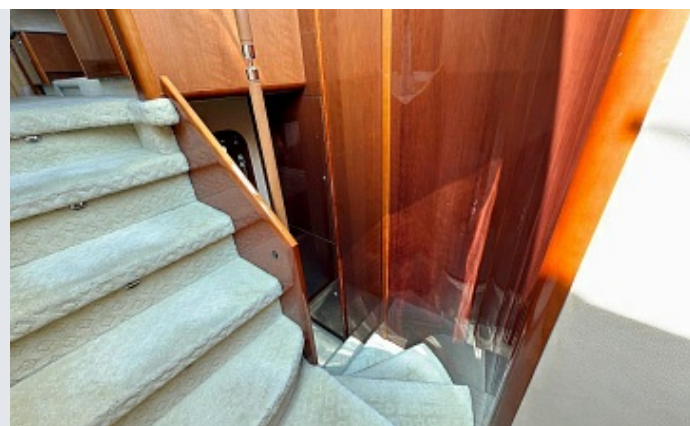
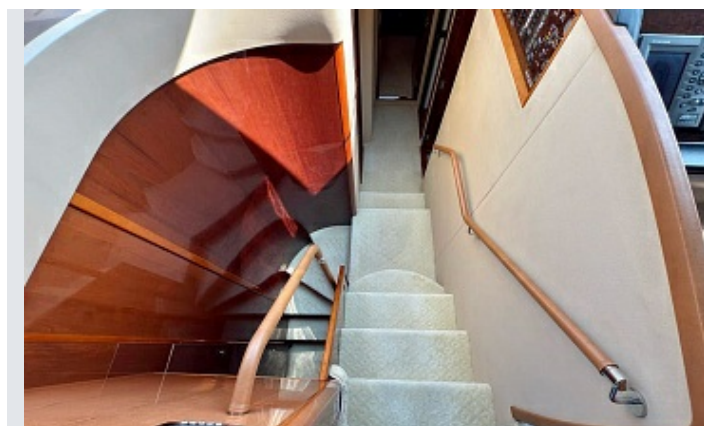
Fuel supply	3409
Cabins	4+1
Customs cleared	Yes
Inspection	Yes

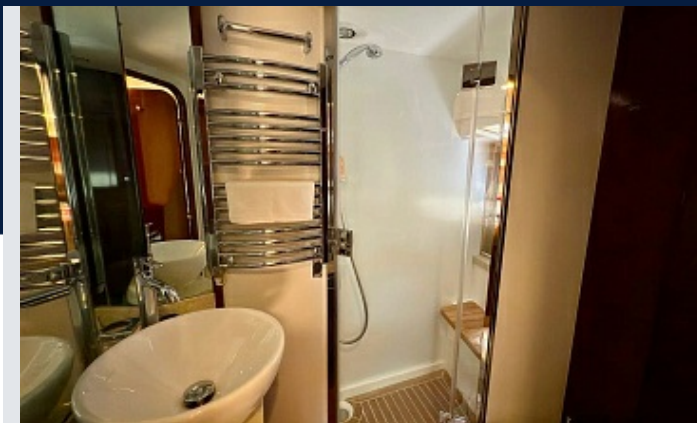














**STANDARD EQUIPMENT**

- Electro-hydraulic steering
- Bow thruster with dual station control
- 24 V electrical system
- Input for connecting 220 V shore power and adjustable 100 A battery charger
- 220 V/240 V diesel generator (11 kW)
- Remote control of electric anchor winch from two stations
- Equipment for washing the anchor and deck
- Electric winches for stern mooring lines
- Electric trimmers with indicators and controls at two stations
- Autopilot at two control stations
- VHF radio with digital selective calling and intercom at two control stations
- Radar
- Chart plotter
- GPS antenna
- Log with speed and distance traveled display at two control stations
- Echo sounder with alarm at two control stations
- Remote-controlled searchlight at two stations
- Microwave oven with grill
- Full-size refrigerator with freezer compartment
- Dishwasher
- Bar with refrigerator
- Ice maker
- Bar with electric barbecue and sink on the flybridge
- Refrigerator on the flybridge
- Washing machine
- Vacuum flush toilets with holding tank
- LCD TV in the saloon
- DVD player with Bose surround sound system
- LCD TV, DVD player, and radio in the master cabin
- Teak-finished swim platform, cockpit, steps leading to the flybridge, and side decks
- Sunbathing area with cushions on the flybridge
- Door from the helm station to the side deck
- Three-panel saloon door with stainless steel frames
- Electro-hydraulically operated gangway with remote control
- Hot and cold water shower on the transom

DECK EQUIPMENT

- Self-stowing delta anchor weighing 40 kg with a 40-meter target

- Locker for bow mooring lines
- Equipment for washing the anchor and deck with fresh water
- Stainless steel cleats for bow and stern mooring lines
- Stainless steel pulpit and railings, fender baskets
- Full set of navigation lights
- Anchor light
- Two electric horns

STERN COCKPIT

- Hatch with gas struts leading to the storage room
- Transom door leading to the swim platform
- Locker for mooring lines

FLYBRIDGE

- Chart table
- Two seats at the helm
- Large U-shaped seat for 6/7 people with table
- Raised aft sunbathing area with storage compartment
- CD player/radio
- Windshields
- Stainless steel handrails
- Deck-level lighting
- Console and seat covers
- Audible alarm connected to the bilge pump

LOWER HELMSPACE

- Two helm seats with longitudinal adjustment
- Elm wood console with engine control instruments and fuel gauges
- High-speed magnetic compass
- Chart table with storage compartment and lamp
- Windshield wipers with washer
- Bilge pump controls
- 24 V and 220 V circuit control panels
- Sliding door for access from the helm station to the side deck

SALOON

- U-shaped sofa with coffee table
- Two-seater sofa opposite
- Entertainment center with LCD TV, DVD player, and radio connected to a Bose surround sound



system;

- Electromechanical device for raising and lowering the TV,
- Refrigerator
- Bottle and glass storage compartment
- Blinds and curtains on all windows and doors
- Ceiling lights
- Stainless steel cockpit rear door frame
- Electric drop-down window on the port side

GALLEY

- Avonite work surface
- Glass-ceramic stove with four heating zones and extractor hood
- Microwave oven with grill
- Double stainless steel sink with mixer tap
- Full-size refrigerator/freezer (24 V/220 V)
- Ice maker
- Dishwasher
- Waste bin
- Ceiling and concealed lighting
- Drawers and sideboards

AMENITIES

- All cabins are equipped with opening and/or non-opening portholes and 220 V sockets. All bathrooms are equipped with vacuum flush toilets with storage tanks and 220 V shaver sockets.

MASTER CABIN

- Cabin spanning the entire width of the ship with a large double bed and lower compartments
- Two bedside tables
- Large wardrobe
- Mirror
- Pouf
- Dressing table
- LCD TV, DVD player/radio
- Shelves, drawers, and compartments
- Ceiling and bedside lamps
- Shower and toilet in the cabin:
- Sink with mixer tap
- Shower with automatic water drainage
- Exhaust fan
- Mirror

- Storage compartments
- Vacuum flush toilet

BOW GUEST CABIN

- Large double bed with storage drawers
- Wardrobes and shelves
- Large mirror
- Dressing table
- Cupboards and drawers
- Ceiling, concealed and bedside lights
- Deck hatch with sliding curtain
- Shower and toilet in the cabin:
- Sink with mixer tap
- Shower with automatic water drainage
- Exhaust fan
- Mirror
- Storage compartments
- Toilet with vacuum flush

RIGHT GUEST CABIN

- Two single beds with storage drawers
- Bedside table with drawers
- Large wardrobe with hangers and shelves
- Storage compartments
- Ceiling and bedside lamps
- Shower and toilet in the cabin:
- Sink with mixer tap
- Shower with automatic water drainage
- Exhaust fan
- Mirror
- Locker
- Additional door for access from the passageway
- Toilet with vacuum flush

LEFT GUEST CABIN

- Two single beds along the entire length of the cabin with lower drawers
- Wardrobe with shelf
- Cabinets with shelves
- Ceiling and bedside lamps

LAUNDRY ROOM

- Washing machine/dryer located near the owner's cabin

OPTIONAL STERN CABIN

- Two large single beds



- exhaust fan with electronic delay timer
- Fresh water supply in the engine room

ELECTRICAL SYSTEMS

- 24 volts:
- 4 powerful batteries for starting engines
- Six powerful auxiliary batteries. • Generators charge batteries via a diode bridge that isolates the starter batteries from the auxiliary batteries. Regulated chargers for charging auxiliary and starter batteries, 100 A. • Main remote battery switches and switch on the main control panel. All circuits are protected by automatic fuses.
- 12 V voltage converter for powering some navigation and radio equipment
- 220/240 V:
- 11 kW generator with its own sound insulation, water-cooled exhaust system, and muffler. • Automatic fire extinguisher located near the generator. • 50 A shore power connection inlet
- Generator/shore power switches
- Polarity check system
- Ground fault protection
- All circuits are protected by automatic fuses.
- 220 V sockets in the master cabin, guest cabins, galley (two), saloon, dining area
- Shaver sockets in all bathrooms

FUEL SYSTEM

- Two fuel tanks (made of marine alloy No. 4) with a connection system, capacity -3409 liters
- Filling necks on the left and right sides of the deck
- High-performance dual fuel filters with water separators, switch valves, and water sensors connected to warning lights at the lower control station. Taps in the cockpit cabinet for remote fuel shut-off. Fuel level indicators at the main control station.

WATER SYSTEM

- 827-liter water tank and 73-liter water heater
- Water heated by engine heat and 220 V immersion heater
- Automatic water pump with filter
- Main switch on the switch panel
- Water level indicator
- Fresh water supply system for toilet flushing with a 255-liter storage tank, content level indicator, low-

- noise electric waste discharge system, backup grinding system, waste disposal system in port. FIRE EXTINGUISHERS • Automatic fire extinguishers in the engine room and generator compartment
- Hand-held fire extinguishers (6 pcs.) in the master cabin, bow, left and right guest cabins, galley, lower control station

BILGE PUMPS

- Automatic electric bilge pumps with priority manual control, installed in the engine room (2), at the control station, in the storeroom and in the bow compartment (7 in total) High-performance manual bilge pump with a valve system and pumping points that coincide with the pumping points of the automatic pump
- Bilge pumps are equipped with controls and indicator lights at the main control station, as well as an audible alarm at the upper control station. Additional options installed on the Princess 62 • Hull color: white with red waterline • Interior finish: classic dark cherry
- European standard electrical outlets (220V-240V)
- Equipped captain's cabin
- Increased power bow thruster instead of standard
- Stern thruster
- Crane on the swimming platform with a lifting capacity of 350 kg, instead of the standard electro-hydraulic ladder with a lifting capacity of 280 kg, in a closed locker
- Teak on the flybridge
- Teak sidewalks
- Additional 20 m of anchor chain, for a total of 60 m.
- Optional stainless steel anchor and installation of a protective polished cover on the bow of the



yacht. • Installation of wooden blinds instead of standard ones on the upper and lower windows in the saloon and dining area. • Table in the dining area with electric lift and lower function

- BOSE Premium audio system includes: BOSE Lifestyle 48 head unit installed in the saloon; BOSE 3.2.1. in the master cabin, connected to the head system, and a pair of speakers on the flybridge connected to the head system
- Installation of a pair of additional speakers with an amplifier in the cockpit, connected to the BOSE Lifestyle 48 head system
- Installation of an additional BOSE 3.2.1 system in the bow cabin connected to the BOSE Lifestyle 48 head system
- Installation of an additional BOSE 3.2.1 system in the starboard cabin connected to the BOSE Lifestyle 48 head system
- 20" LCD TV installed in the bow cabin
- 20" LCD TV installed in the starboard cabin
- Furuno 1944C Radar/chart plotter/GPS (10.4" monitor) instead of the standard Furuno 1934C
- Additional Furuno GD1920C (10.4" screen) on the flybridge Fishfinder function connected to Furuno monitors at two control stations
- Installation of three video cameras: on the radar arch, in the cockpit and in the engine room with signal output to Furuno monitors and TV in the master cabin
- ONAN 17.5 kW generator instead of the standard ONAN 11 kW
- Reversible cycle air conditioning system throughout the yacht, including air conditioning in the captain's cabin
- Anti-fogging system for windows
- Bimini top (cover with metal frame) (dark blue)
- Optional blue cockpit covers instead of standard white ones
- Optional folding polished table on the flybridge
- Underwater lighting under the swimming platform (4 light points)
- Additional lighting throughout the yacht hull
- Hull preparation for future installation of a water desalinator
- Installation of an electronic safe in the master cabin



CONTACT A BROKER

+7 916 777 28 07 

s.vedenyapin@marinepoint.com

OFFICE

+7 495 787 87 57 | info@marinepoint.com

125212, Moscow, Leningradskoe shosse, 39 building 6



MARINEPOINT in
socials

