



Brokerage



DOMINATOR 780

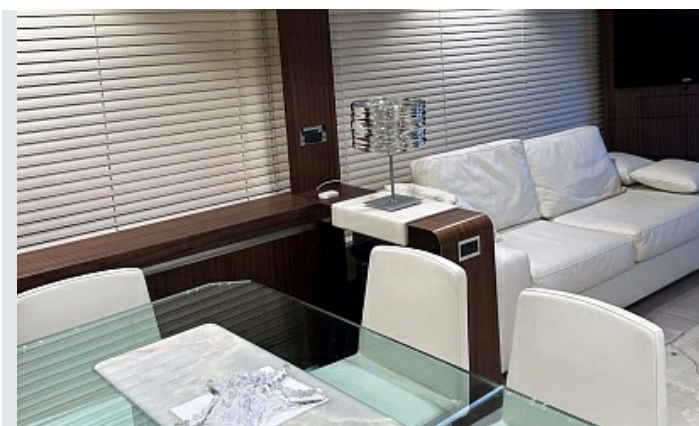
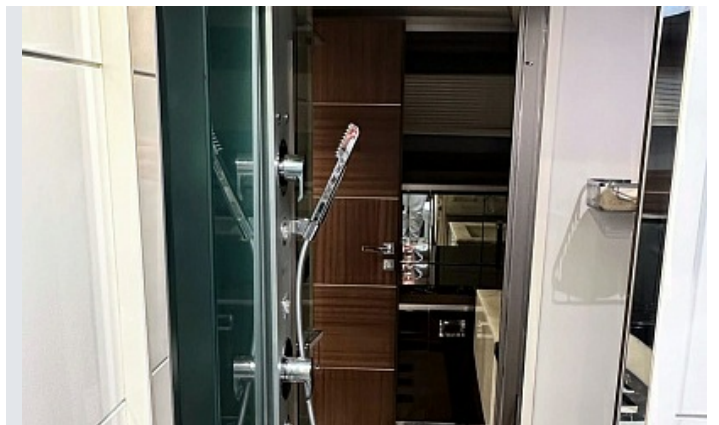
210 006 450 ₺

MAIN CHARACTERISTICS

Location	Croatia
Year created	2012
Length	23,95
Width	6
Draft	2,06
Engines	2 x MAN V12 1800 HP
Operating time	295
Water supply	1385

Fuel supply	7500
Cabins	4+2
Customs cleared	No









FLYBRIDGE



MAIN DECK



LOWER DECK





- Wide plexiglass windshield with stainless steel supports
 - Besenconi G309 electro-hydraulic crane, load capacity 400 kg
 - Fiberglass instrument panel, including:
 - Gauges and LEDs for engines and gearboxes
 - Engine warning monitors
 - Engine control levers with emergency system
 - Steering angle indicator
 - Fuel level indicator
 - Engine room temperature indicator
 - Simrad IS 20 wind
 - Simrad IS 20 chart plotter
 - Simrad IS 20 compass
 - Simrad IS 20 combo
 - Simrad AP28 autopilot
 - Simrad S35 steering lever
 - VHF radio RAY 240E
 - Searchlight control
 - Thruster control
 - VDO alarms for various alerts
 - Transom plate control
 - Intercom station
 - Anchor winch control
 - RAYMARINE G150 chartplotter radar/GPS echo sounder
-
- Bar, including:
 - Stainless steel sink with hot and cold taps
 - Refrigerator
 - Whirlpool barbecue
-
- TRACVISION TV KVH M7 antenna
 - RAYSTAR 125 SEATALK/NMEA GPS antenna
 - 48" RADAR OPEN ARRAY HD antenna
 - 2 waterproof speakers connected to the stereo system
 - 2 spotlights for the navigation bridge
 - 3 spotlights under the protective arch
 - Navigation lights
 - Horn
 - 2 8/P Eurovinil life rafts
 - Hydraulic Bimini top with LED lights

Main deck and cockpit

- External LED lighting on the walkway
- LED lighting on the handrail
- Water pipe to bow locker winches
- PROJECT X4 2500 W 24 V windlass
- Anchor winch control
- 3 windshield wipers with washer
- Sunbathing area on the foredeck with external mattresses on both sides and above the pool, fiberglass and stainless steel handrails, and a waterproof cover
- Fiberglass hot tub with LED lighting
- Reinforced safety glass windows with sun-blocking screens
- 2 electric windlasses on the foredeck in the technical area
- 90 kg Sanguineti anchor, model SC92, galvanized
- 14 mm chain, 100 m
- Chain wash
- SANSHIN spotlight on the bow
- LED ceiling lights in the cockpit in accordance with the T4 lighting plan
- Stair lighting
- Small sofa on the bow with lockers, cushions, and waterproof cover
- Wooden table on the bow in front of the sofa with stainless steel legs and waterproof cover
- External wooden table in the cockpit with stainless steel legs and waterproof cover
- Cockpit sun canopy
- Access to the engine room from the cockpit via a stainless steel ladder
- 2 weatherproof speakers in the cockpit on the main deck
- Electro-hydraulic stairs to the bathroom – Besenconi model SI 402
- 2 shore power cables and 220 V 32 A sockets with 20 m cable
- Cockpit shower with hot and cold

**water**

- Nemo electric waterproof side door for the galley
- Glendinning electric cable reel on one side
- 3 pilot stations in the cockpit (engine start-stop, bow/stern thruster, and anchor winch)
- Infrared camera

Safety equipment:

- 1 lifebuoy
- 1 first aid kit
- 1 lifebuoy
- 1 floating rope
- 16 life jackets
- 2 life rafts, each for 8 people
- 1 marine horn
- 1 marine bell
- 7 fire extinguishers with 2 kg of powder

Stern platform

- Foldable bathing platform with hydraulic levers manufactured by H+B Technics, load capacity 1000 kg. Load capacity (without platform weight) approx. 700 kg
- Teak platform and steps with lighting
- 4 underwater lights at the stern

Upper deck**Saloon**

- Leather sofas
- Smoking table
- 1 chaise longue
- 1 leather pouf
- Furniture on the right with a 40" TV
- Ceiling lighting with LED lamps
- Bar with sliding partitions
- Dining room on the left with a large table for 8 people
- Ice maker – CLASSIC REFILL PF DX 220-240 V 50 Hz
- 220 V socket
- Electric curtains
- Wooden floors
- Marble floor at the entrance
- BOSE dolby digital lifestyle 38
- HUMAX F3-FOX CI digital satellite receiver (in the central rack)
- ORION analog telephone

Galley

- WHIRPOOL EXTRACTOR IX extractor hood
- WHIRLPOOL 40L CRISP microwave oven
- BOSCH ceramic hob with 4 burners
- Refrigerator + freezer. 250 l (220 V and 24 V) (with seawater cooling)
- Stainless steel sink with hot and cold water mixer
- Dishwasher – Bosch, model SRV 46A63
- Vertical storage cabinet
- Wooden floors
- Marble countertop
- Fire extinguisher
- Tableware for 8 people with glasses, dishes, and stainless steel cutlery
- Blinds
- LED ceiling lights

Wheelhouse

- 1 electrically adjustable leather pilot seat
- LED ceiling lights
- Storage box for navigation charts
- Wooden floor
- Curtains
- Ladder to the berths, protected by a stainless steel handrail
- BCS hydraulic steering system
- Infrared camera monitor in the engine room and cabin

Lower deck**Owner's cabin**

- BOSE Dolby Digital Lifestyle 38
- Humax SET-TOPBOXE F3 CI digital satellite receiver
- 2 bedside tables
- 2 reading lamps
- Leather sofa
- Lounge with leather pouf
- Narrow bulkhead with 32" TV
- Wardrobe with hangers, drawers, and lighting
- Safe
- Long windows and additional opening portholes
- 220 V power outlet
- Electric sun blinds

**220 V power outlet**

- Marble floor
- Blinds
- Stainless steel skylight with mosquito net
- LED ceiling lights
- 1 Tecma electric toilet (large size)
- 1 Tecma bidet
- 2 mirrors with halogen lamps (large size)

VIP cabin

- 2 bedside tables
- 2 wall lamps by the headboard
- Halogen ceiling lamps
- Stainless steel side portholes with mosquito nets
- Emergency exit through a ceiling hatch with a ladder to the main deck in the bow
- LED ceiling lights
- 220 V power outlet
- Sunshades
- Bose Dolby Digital 3.2.1 GS
- Humax Digital Satellite SET-TOP BOX F3 – FOX CI (in the central rack)
- 25" LED TV
- ORION analog telephone

Bathroom (VIP)

- Shower cabin with teak flooring
- Extractor fan
- Ceramic washbasin unit with marble countertop and storage space
- Mirror with halogen lamps
- Hot/cold water mixer
- Stainless steel porthole with mosquito net
- Marble floor
- 220 V power outlet
- Blinds
- Tecma electric toilet with bidet function
- LED ceiling lights

2 guest cabins

- BOSE Dolby Digital 3.2.1 GS
- ORION analog telephone
- LED ceiling lights
- 2 stainless steel portholes with mosquito nets and sunshades
- Headrest lamp
- 220 V power outlet

- Curtains
- 25" LED TV

Guest bathrooms

- Exhaust fan
- Shower cabin separated by teak slats
- Ceramic and painted glass/marble washbasin unit
- Mirrored cabinet with halogen lights
- LED ceiling lights
- Stainless steel portholes with mosquito nets
- 220 V socket
- Blinds
- Tecma electric toilet with bidet option
- LED ceiling lights
- Three-way system for direct overboard drainage only in the guest bathroom

Engine compartment

- Main engines: 2 x MAN 1800 hp
- Gearboxes: ZF 3050 V, gear ratio 2714:1
- Transmission configuration: V-drive, free-standing
- Twin-shaft coupling
- Cardan shaft between engine and gearboxes
- Engine room fully soundproofed
- Cathodic protection system with zinc anodes
- 95 mm diameter stainless steel shafts, OTMAN shaft bearings and GRP deadwood pipes, carbon and stainless steel deadwood pipe seals
- Marine Nibral propellers with five blades ROLLA Nibral 1067x1400

Power supply

- 2 ONAN MDKBF 22.5 kW generators located in the engine room
- 2 x 220 V shore power sockets
- 3 x 80 A MASTERVOLT battery chargers for service, engines, and generators

Lighting

- Main 220 V LED lighting
- Waterproof 24 V LED outdoor lights

MARINEPOINT LLC is not responsible for the accuracy of the information provided by the shipowner. The parameters of the yacht, including the operating time of engines and equipment, are indicated at the time of preparation of the information and may change during further operation. The information contained in this brochure does not constitute an offer.



Air conditioning system

- Condaria PCWM/FCL 36003 air conditioner, 144,000 BTU, tropicalized
- Air conditioning control in all cabins, saloon, dining area and crew cabin

MARINPOINT LLC is not responsible for the accuracy of the information provided by the shipowner. The parameters of the yacht, including the operating time of engines and equipment, are indicated at the time of preparation of the information and may change during further operation. The information contained in this brochure does not constitute an offer.




MARINEPOINT

CONTACTS



CONTACT A BROKER

+7 916 777 28 07 

s.vedenyapin@marinepoint.com

OFFICE

+7 495 787 87 57 | info@marinepoint.com

125212, Moscow, Leningradskoe shosse, 39 building 6



MARINEPOINT in socials



MARINEPOINT LLC is not responsible for the accuracy of the information provided by the shipowner. The parameters of the yacht, including the operating time of engines and equipment, are indicated at the time of preparation of the information and may change during further operation. The information contained in this brochure does not constitute an offer.